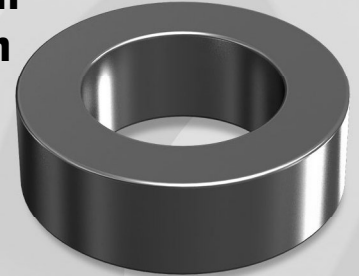


OD 778

OD 77.8mm / 3.063inch

ID 49.23mm
HT 15.9mm



Core Dimensions

		OD(max)	ID(min)	HT(max)
Before coating	(mm)	77.80	49.23	15.9
	(inch)	3.063	1.938	0.626
After coating (Epoxy)	(mm)	78.90	48.0	17.2
	(inch)	3.108	1.888	0.677

Magnetic Dimensions

Cross Section (A)	Path Length (l)	Window Area (Wa)	Volume (V)
2.270cm ²	20.0cm	17.99cm ²	43.531cm ³
0.352in ²	7.72in	3,550,000cmil	2.656in ³

Winding Information

AWG Wire No.	Single Layer Dia(cm)	Turn Rdc,Ω	AWG Wire No.	Single Layer Dia(cm)	Turn Rdc,Ω
10	0.267		19	0.0980	
11	0.238		20	0.0879	
12	0.213		21	0.0785	
13	0.190		22	0.0701	
14	0.171	N · A	23	0.0632	N · A
15	0.153		24	0.0566	
16	0.137		25	0.0505	
17	0.122		26	0.0452	
18	0.109		27	0.0409	

Single layer winding with 1 inch leads

Available Cores

MPP	Part No.			AL (nH/N ²)	Perm. (μ)
	High Flux	Sendust	Mega Flux®		
CM778026	CH778026	CS778026	CK778026	35	26
CM778060	CH778060	CS778060	CK778060	85	60
-	-	CS778075	CK778075	107	75
-	-	CS778090	CK778090	128	90
CM778125	CH778125	CS778125	-	178	125
-	-	-	-	-	147
-	-	-	-	-	160
-	-	-	-	-	173
-	-	-	-	-	200

AL vs NI Curve (60μ, 125μ)

