

# OD 740

## Core Dimensions

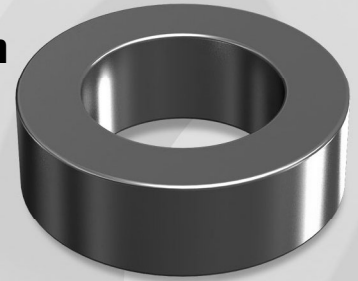
		OD(max)	ID(min)	HT(max)
Before coating	(mm)	74.1	45.3	35.0
	(inch)	2.917	1.783	1.378
After coating (Epoxy)	(mm)	75.2	44.07	36.27
	(inch)	2.961	1.735	1.428

## Magnetic Dimensions

Cross Section (A)	Path Length (l)	Window Area (Wa)	Volume (V)
5.040cm <sup>2</sup>	18.38cm	15.25cm <sup>2</sup>	92.64cm <sup>3</sup>
0.781in <sup>2</sup>	7.24in	3,009,310cmil	5.653in <sup>3</sup>

OD 74.1mm / 2.917inch

ID 45.3mm  
HT 35.0mm



## Winding Information

AWG Wire No.	Single Layer Dia(cm)	Turn Rdc, Ω	AWG Wire No.	Single Layer Dia(cm)	Turn Rdc, Ω
10	0.267		19	0.0980	
11	0.238		20	0.0879	
12	0.213		21	0.0785	
13	0.190		22	0.0701	
14	0.171	N · A	23	0.0632	N · A
15	0.153		24	0.0566	
16	0.137		25	0.0505	
17	0.122		26	0.0452	
18	0.109		27	0.0409	

Single layer winding with 1 inch leads

## Available Cores

MPP	Part No.			AL (nH/N <sup>2</sup> )	Perm. (μ)
	High Flux	Sendust	Mega Flux®		
CM740026	CH740026	CS740026	CK740026	89	26
CM740060	CH740060	CS740060	CK740060	206	60
-	-	CS740075	CK740075	257	75
-	-	CS740090	CK740090	309	90
CM740125	CH740125	CS740125	-	429	125
-	-	-	-	-	147
-	-	-	-	-	160
-	-	-	-	-	173
-	-	-	-	-	200

## AL vs NI Curve (60μ, 125μ)

