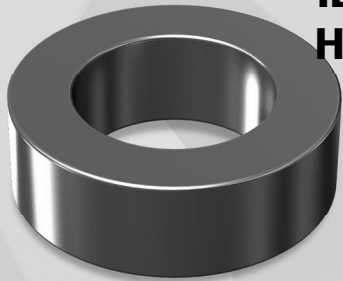


# OD270

OD 26.92mm / 1.060inch



ID 14.73mm  
HT 11.18mm

## Core Dimensions

		OD(max)	ID(min)	HT(max)
Before coating	(mm)	26.92	14.73	11.18
	(inch)	1.060	0.580	0.440
After coating (parlyene-C)	(mm)	27.70	14.10	11.99
	(inch)	1.090	0.555	0.472

## Magnetic Dimensions

Cross Section (A)	Path Length (l)	Window Area (Wa)	Volume (V)
0.654cm <sup>2</sup>	6.35cm	1.56cm <sup>2</sup>	4.154cm <sup>3</sup>
0.1014in <sup>2</sup>	2.50in	308,000cmil	0.2536in <sup>3</sup>

## Available Cores

MPP	Part No.			AL (mH/N <sup>2</sup> )	Perm. (μ)
	High Flux	Sendust	Mega Flux®		
CM270026	CH270026	CS270026	CK270026	32	26
CM270060	CH270060	CS270060	CK270060	75	60
-	-	CS270075	CK270075	94	75
-	-	CS270090	CK270090	113	90
CM270125	CH270125	CS270125	-	157	125
CM270147	CH270147	-	-	185	147
CM270160	CH270160	-	-	201	160
CM270173	-	-	-	217	173
CM270200	-	-	-	251	200

## Winding Information

AWG Wire No.	Single Layer Dia(cm)	Turn	Rdc,Ω	AWG Wire No.	Single Layer Dia(cm)	Turn	Rdc,Ω
13	0.190	18	0.00514	22	0.0701	53	0.107
14	0.171	20	0.00715	23	0.0632	59	0.149
15	0.153	23	0.0100	24	0.0566	66	0.209
16	0.137	26	0.0141	25	0.0505	74	0.294
17	0.122	29	0.0197	26	0.0452	83	0.414
18	0.109	33	0.0276	27	0.0409	93	0.575
19	0.0980	37	0.0387	28	0.0366	104	0.812
20	0.0879	42	0.0541	29	0.0330	115	1.11

Single layer winding with 1 inch leads

## AL vs NI Curve (60μ, 125μ)

